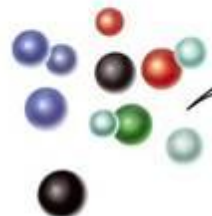


Dalle cellule ai tessuti
As 2013/2014

1 LIVELLO CHIMICO



Atomi (C, H, O, N, P)



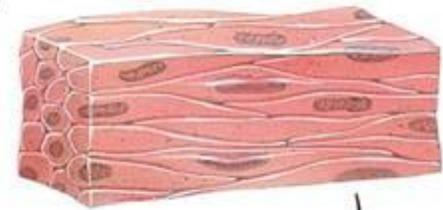
Molecole (DNA)

2 LIVELLO CELLULARE



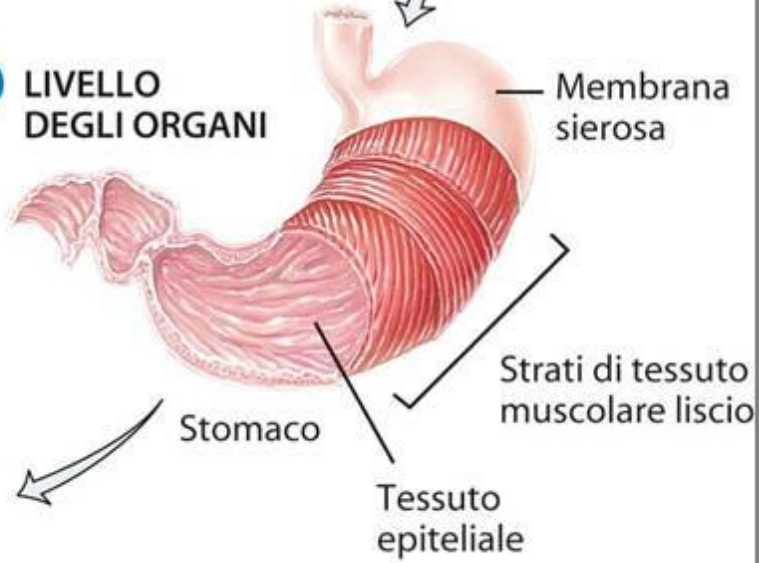
Cellula muscolare liscia

3 LIVELLO DEI TESSUTI



Tessuto muscolare liscio

4 LIVELLO DEGLI ORGANI

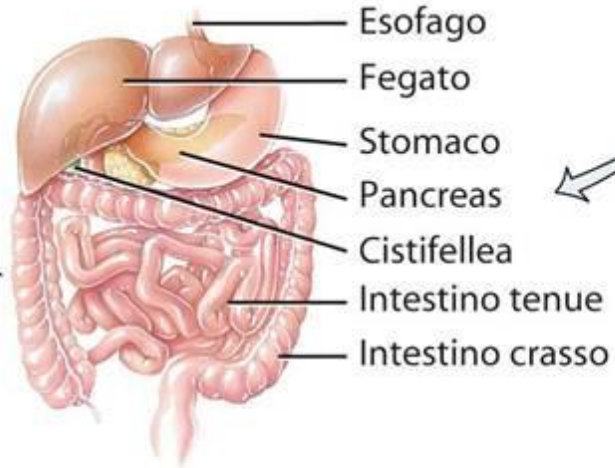


Membrana sierosa

Strati di tessuto muscolare liscio

Tessuto epiteliale

5 LIVELLO DEGLI APPARATI



Esofago

Fegato

Stomaco

Pancreas

Cistifellea

Intestino tenue

Intestino crasso

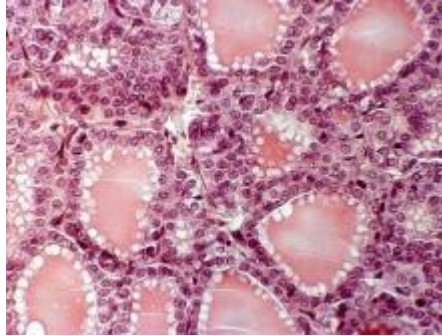
Apparato digerente



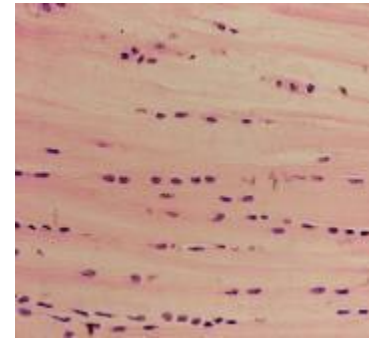
6 LIVELLO DELL'ORGANISMO

I tessuti del corpo umano

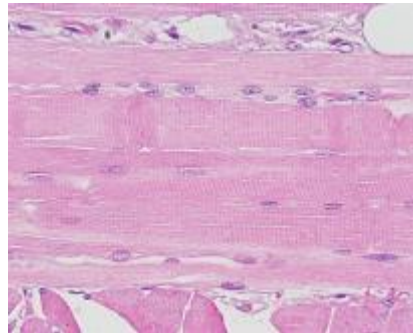
- Epiteliale



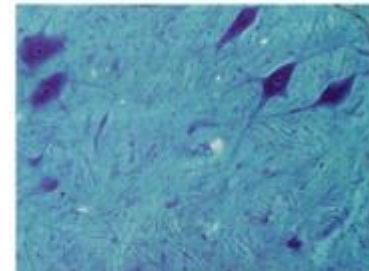
- Connettivo



- Muscolare

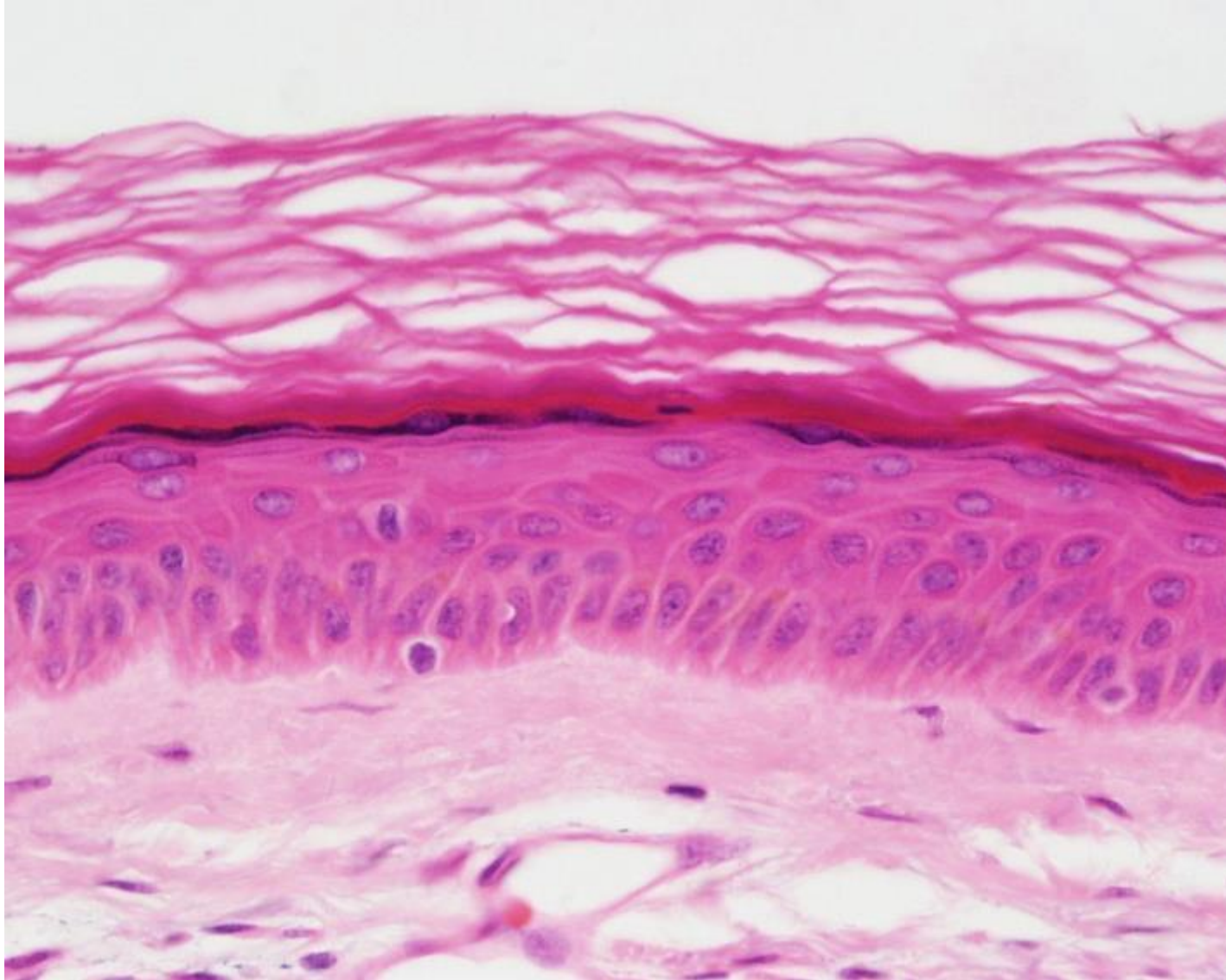


- nervoso

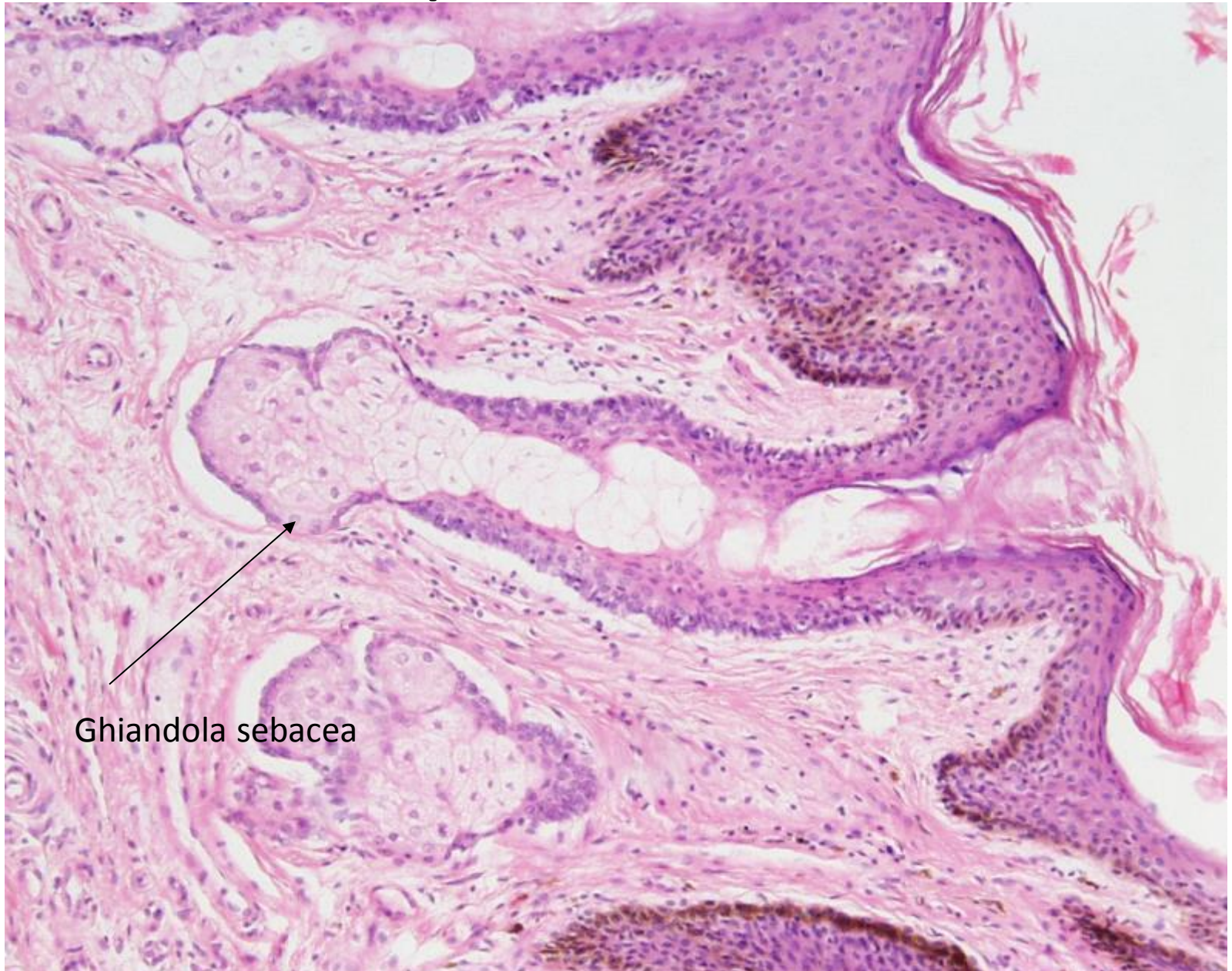


Tessuto epiteliale

Epitelio
superficiale
cheratinizzato

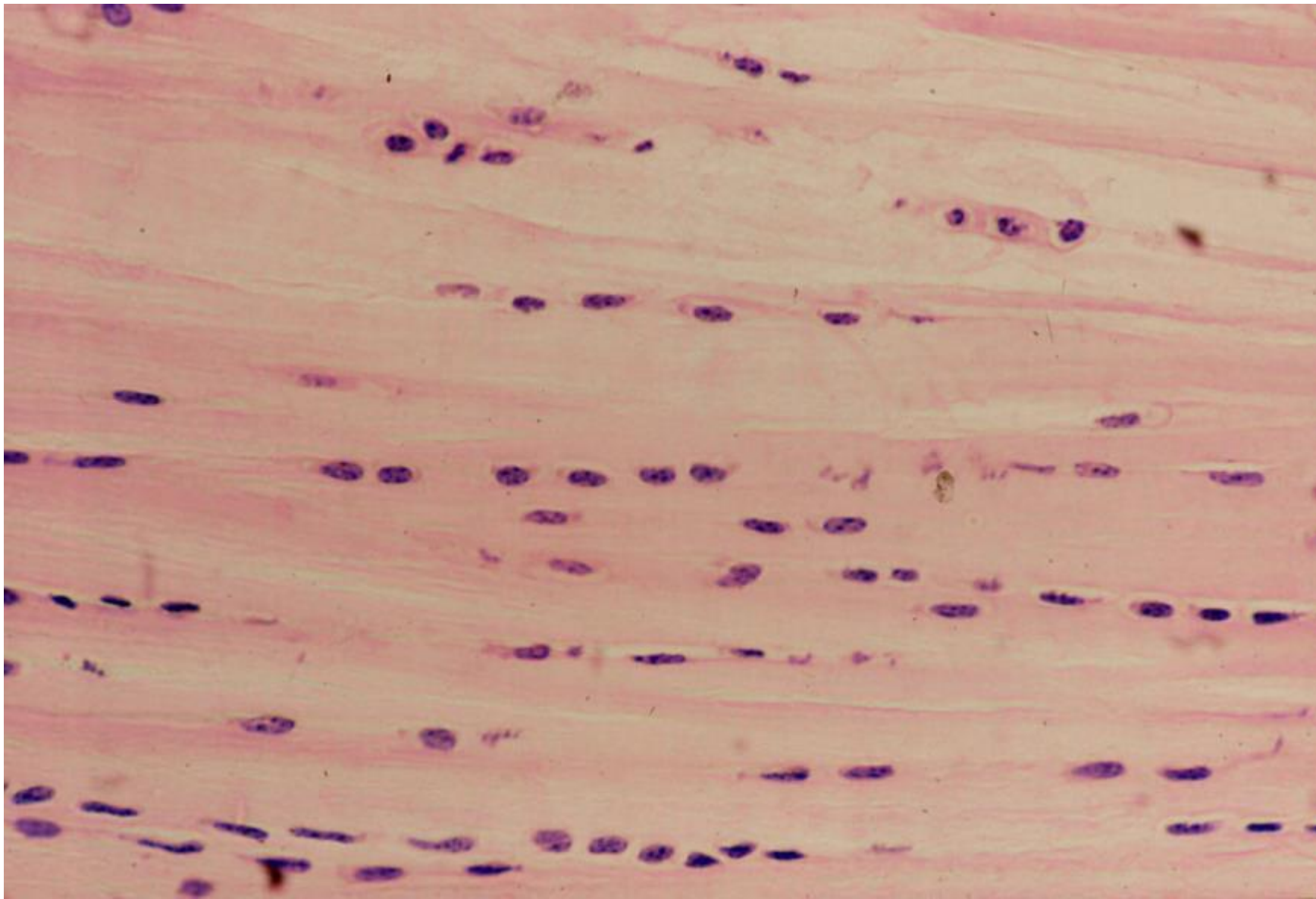


epidermide

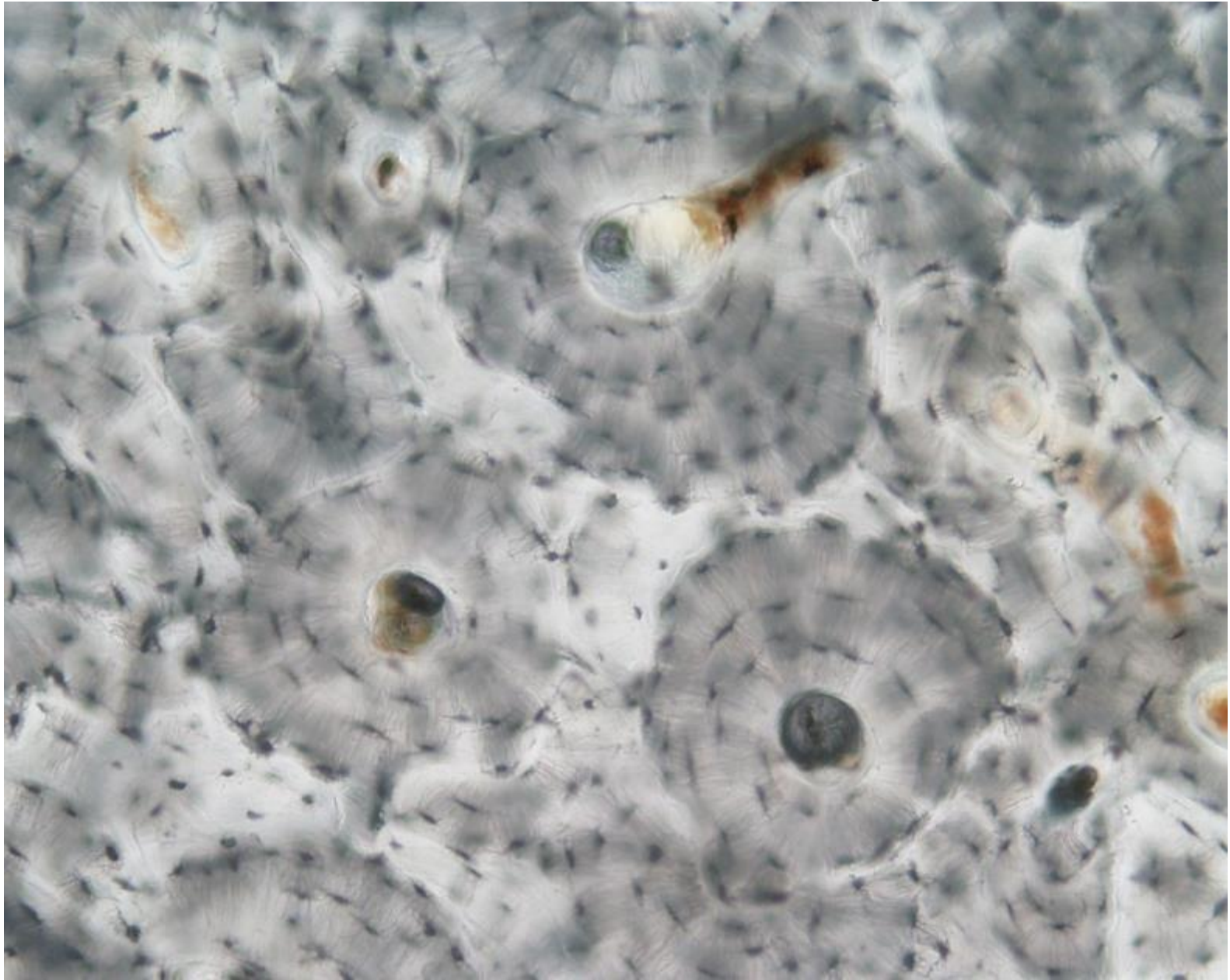


Ghiandola sebacea

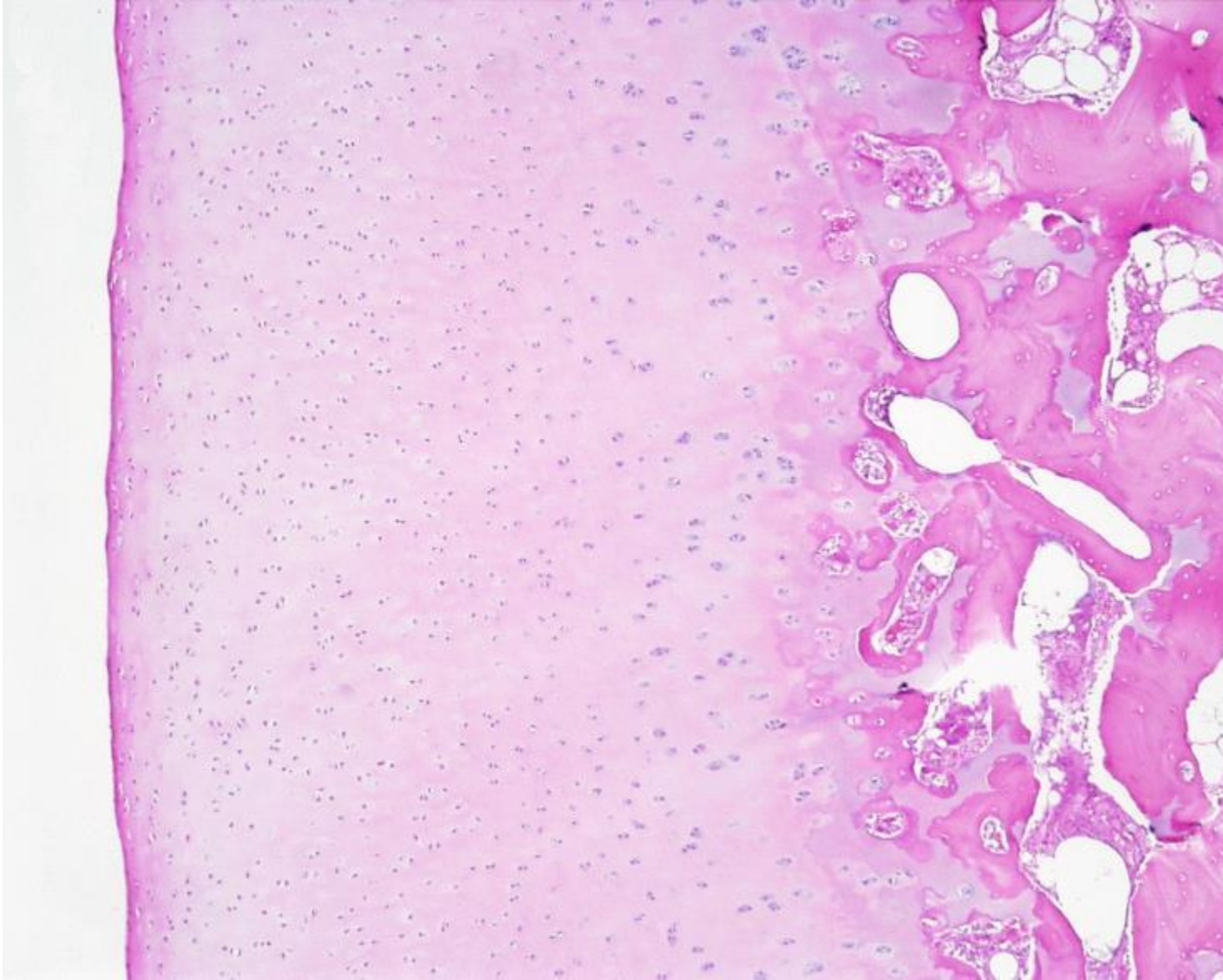
Tessuto connettivo p.d.



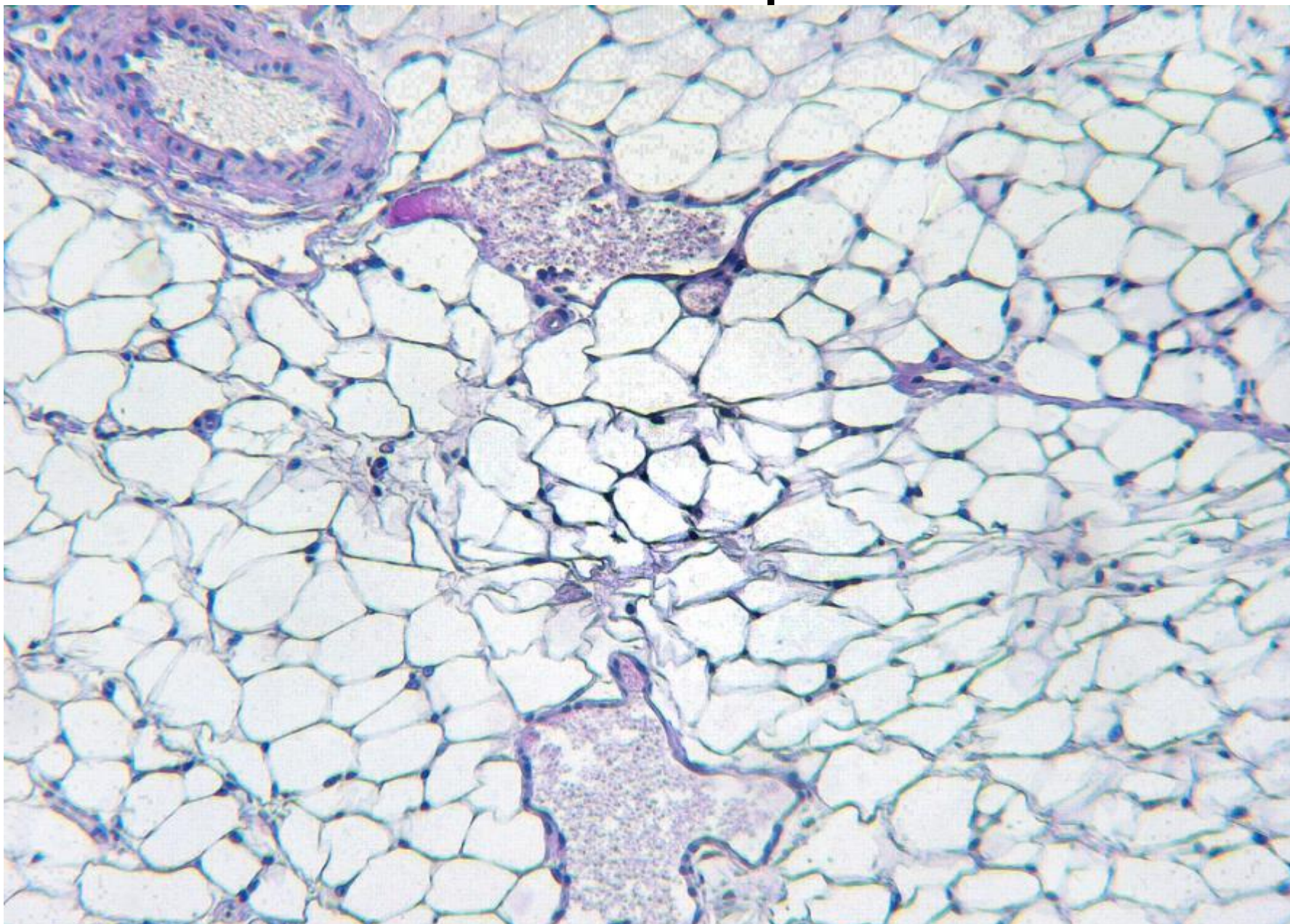
Tessuto osseo compatto



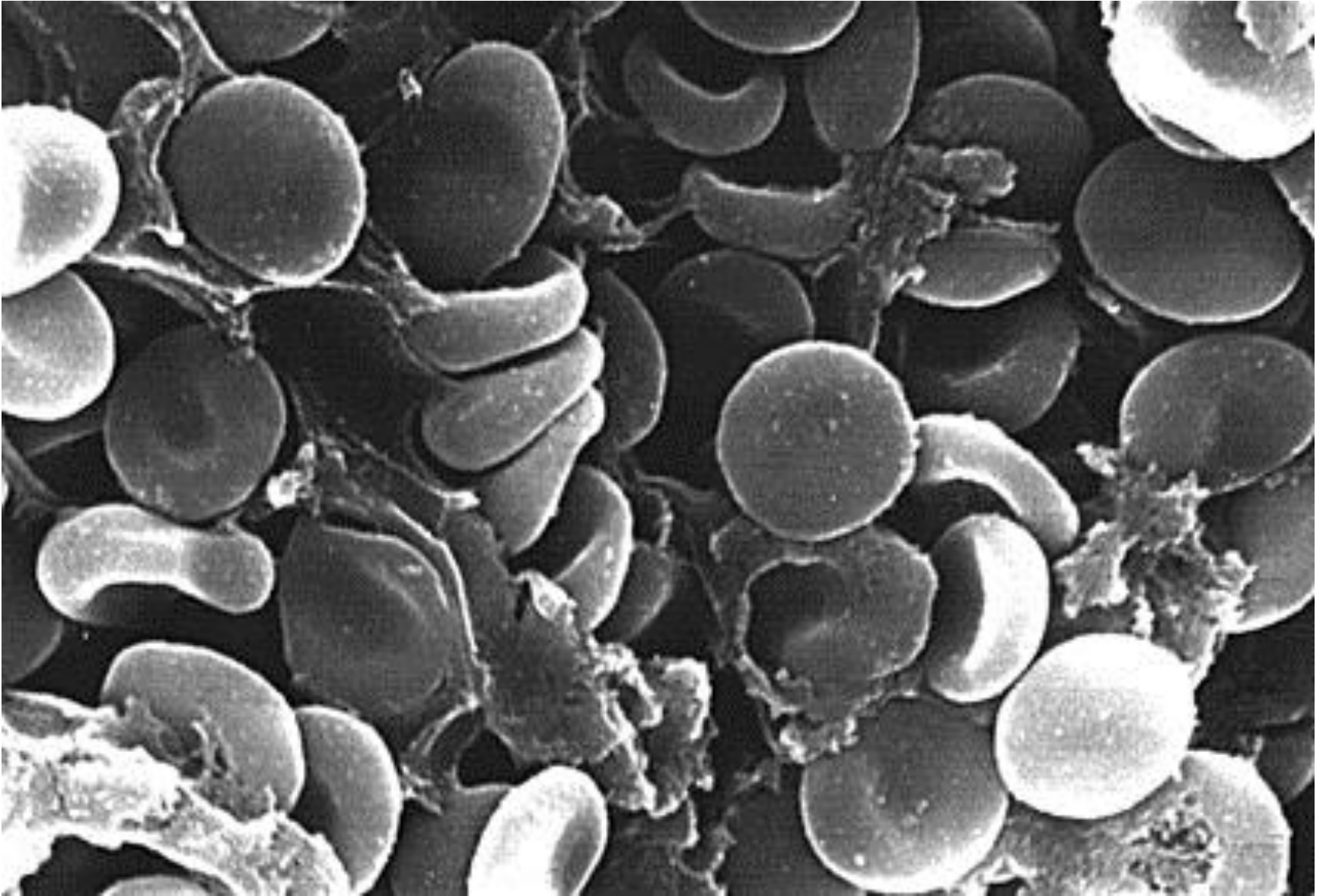
cartilagine



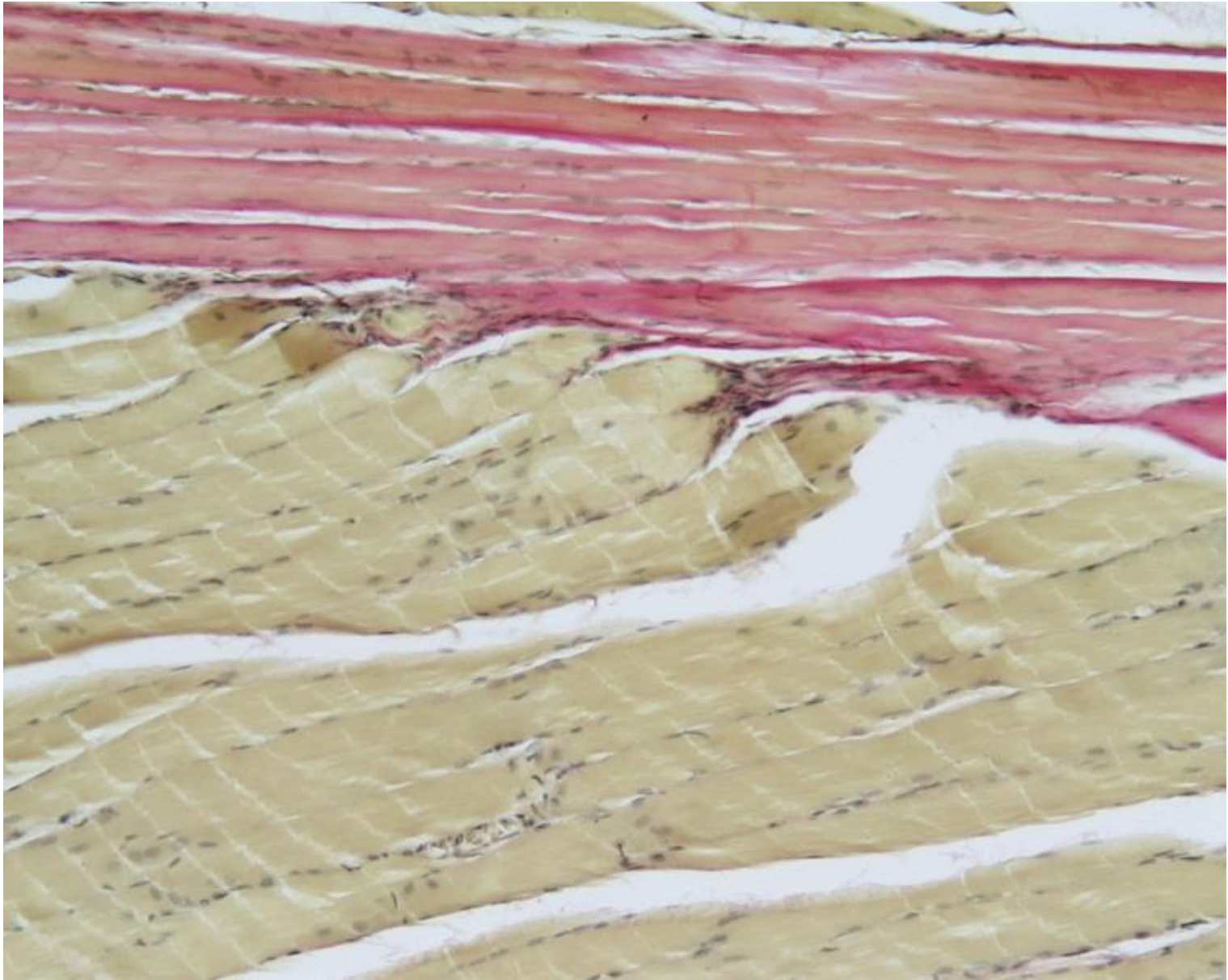
Tessuto adiposo



sangue



Tendine



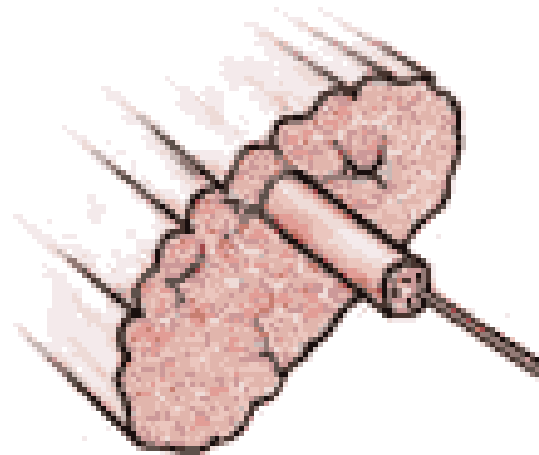
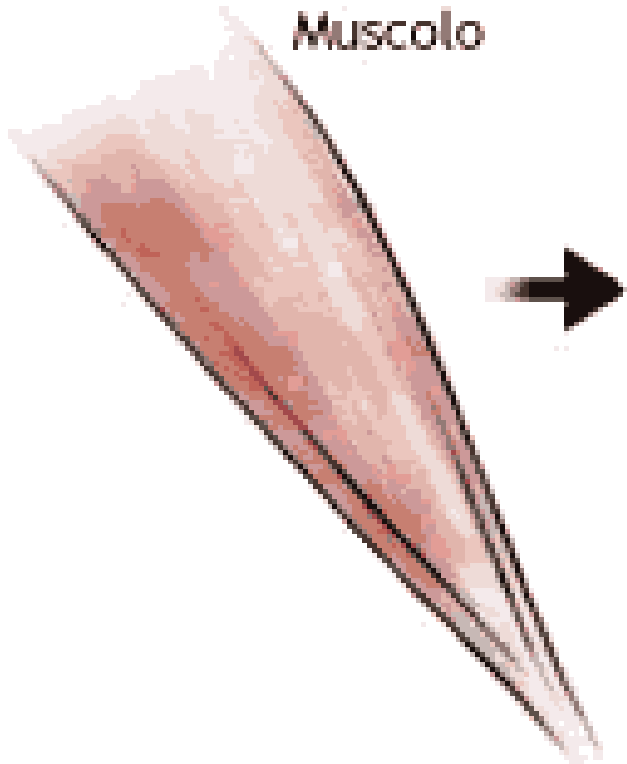
Tessuto muscolare

- Striato e volontario
- Liscio e involontario
- Cardiaco (striato ma involontario)

Muscolo

Fascio muscolare

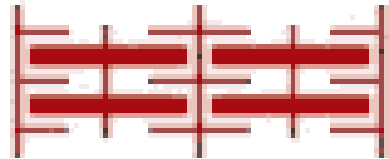
Fibra muscolare



Miofibrilla

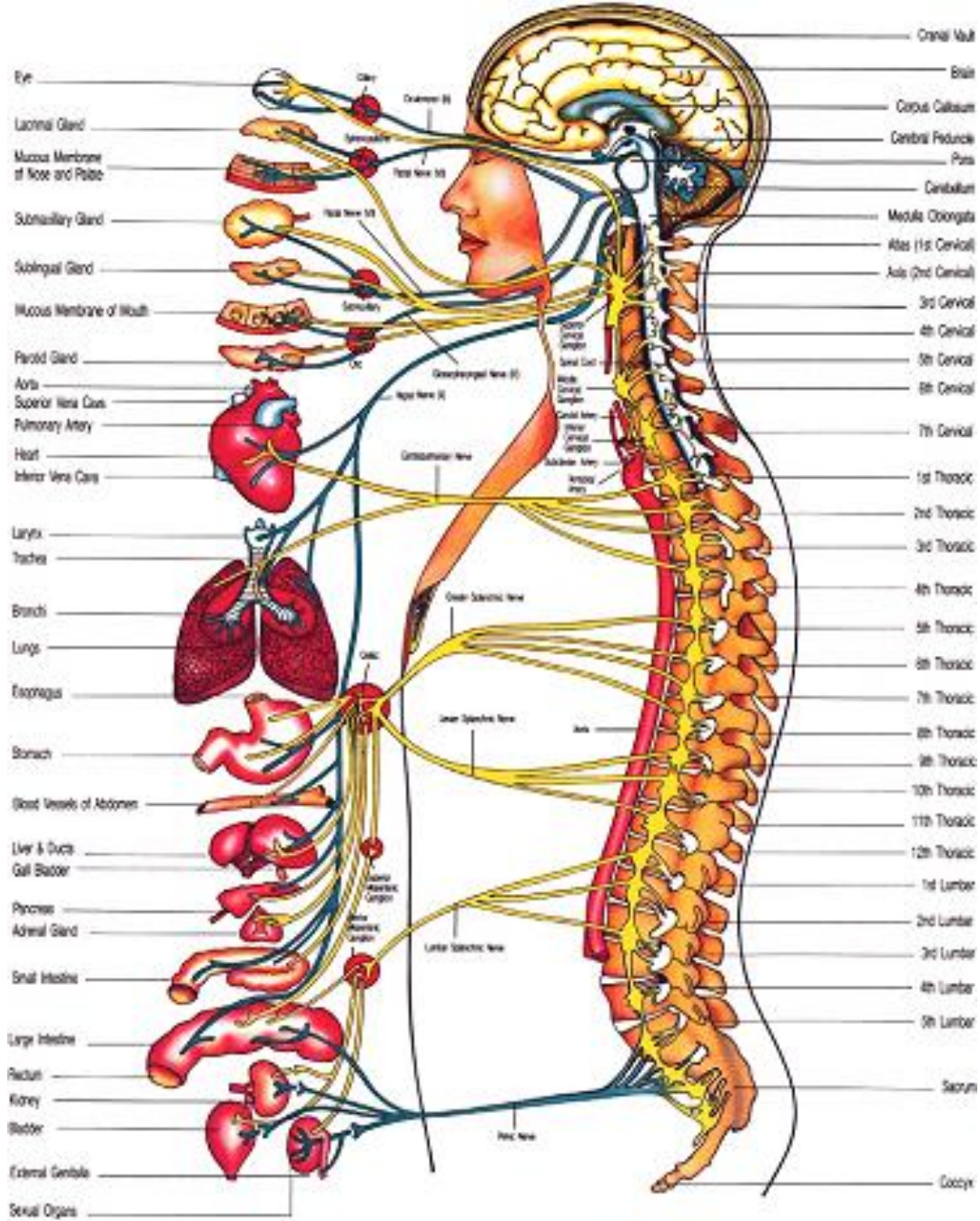


Miofilamenti



Tessuto nervoso





AUTONOMIC NERVOUS SYSTEM
 Sympathetic — Yellow Parasympathetic — Green

A NEURON

